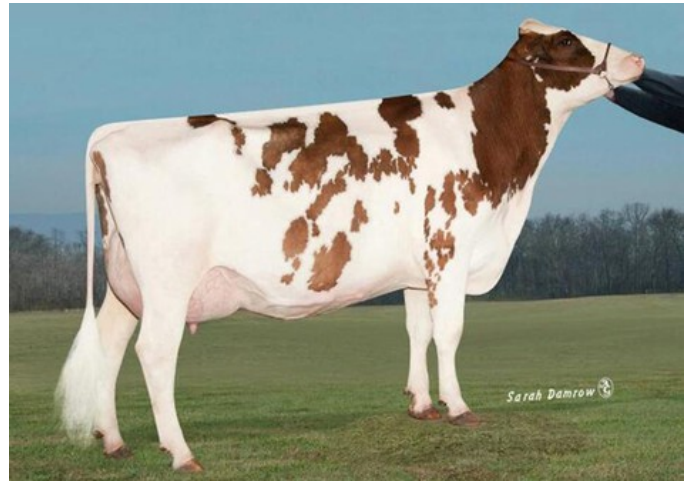




Islehaven Gold Dancer-Red VG-88



Stoneden Snowman Red Desire VG-86

Foundation RDC x Ranger-Red x Pursuit x Pine-Tree Splendid-P x Denver x Jabir x VG-86 Snowman x VG-88 Goldwyn x VG-85 Lee x EX-90 Charles

- Roodbonte Foundation RDC-dochter met veel melk, positieve gehalten en positieve dochtervruchtbaarheid.
- Eén van de weinige, geteste, Europese dochters van de stier Foundation.

GENOMICS

Genomic index USA: +2861 GTPI (2024-08)

|            |          |          |           |      |      |        |
|------------|----------|----------|-----------|------|------|--------|
| Productie  | 1280 M   | 0.10%V   | 0.07%E    | 76 V | 59 E | 880 NM |
| Gezondheid | +5.4 PL  | 2.80 SCS | +0.2 DPR  |      |      |        |
| Exterieur  | 1.21 UDC | 0.40 F&L | 1.03 PTAT |      |      |        |

AFSTAMMING

