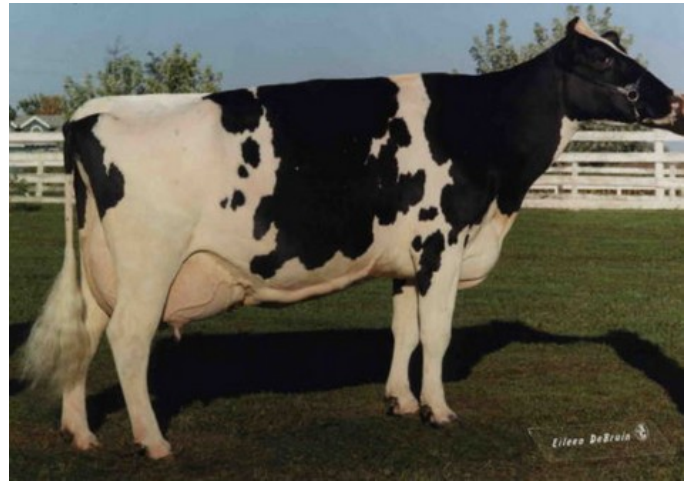




De Oosterhof Dg Rose RDC VG-89



Golden-Oaks Mark Prudence EX-95

GP-84 Freestyle-Red x GP-83 Andy-Red x GP-82 Apprentice RDC x VG-89 Rubicon x GP-83 Aikman RDC x VG-85 Man-O-Man x VG-87 Mascol x VG-88 Durham x EX-90 Rudolph x EX-95 Chief Mark

GENOMICS

Genomic index DEU: **+142 GRZG** (2024-09)

Productie	1627 M	-0.08%V	-0.06%E	57 V	50 E	138 RZM
Gezondheid	112 RZN	117 RZS	106 RZR	120 RZGes	1913 RZ€	
Exterieur	111 KÖR	107 MTY	98 EUT	104 FUN	107 RZE	

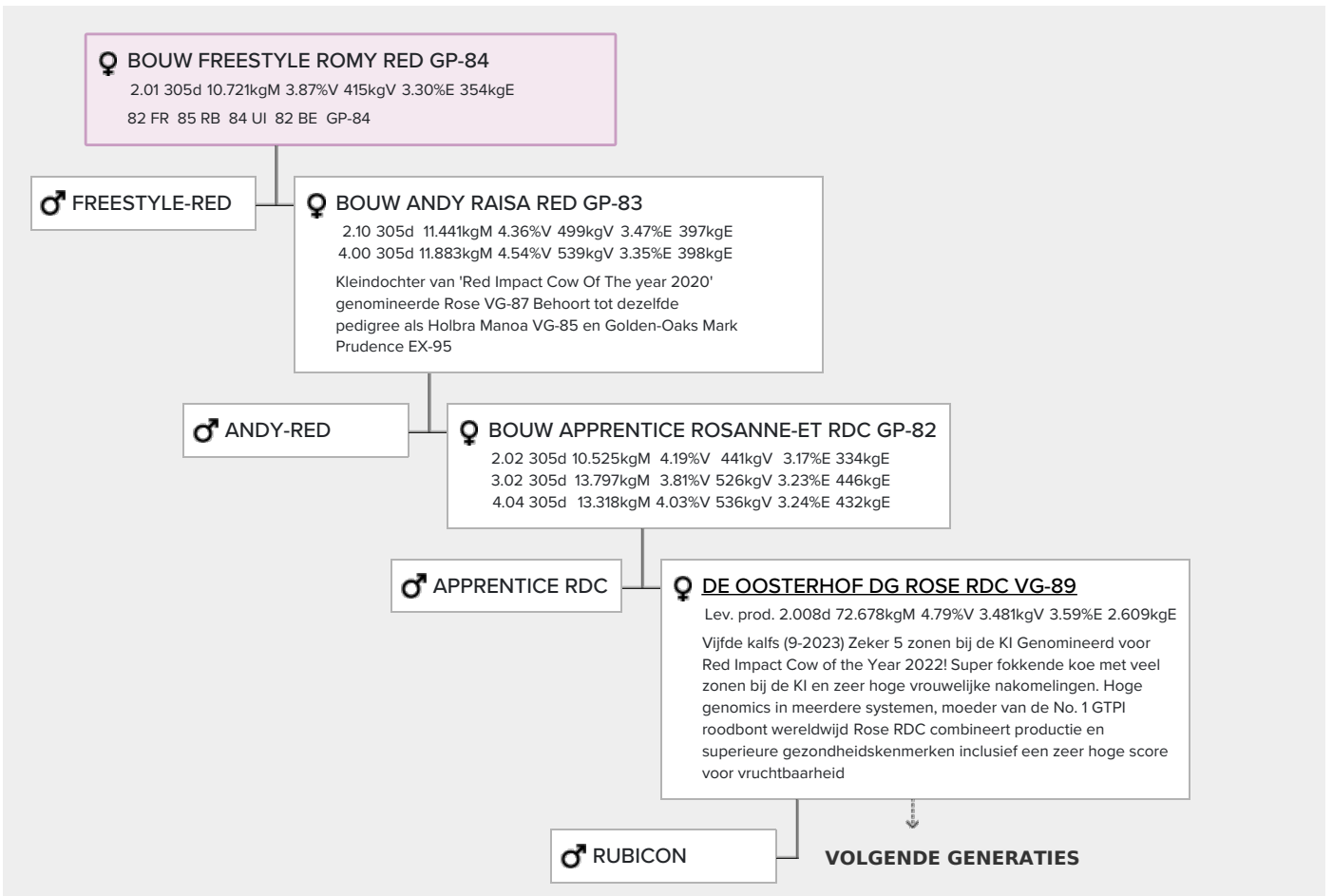
Genomic index USA: **+2643 GTPI** (2024-08)

Productie	1345 M	0.00%V	0.02%E	51 V	48 E	685 NM
Gezondheid	+4.9 PL	2.70 SCS	+0.6 DPR			
Exterieur	-0.20 UDC	0.54 F&L	0.26 PTAT			

Genomic index NLD: **+299 GNV** (2023-08; RB)

Productie	2686 M	-0.29%V	-0.22%E	89 V	72 E	519 INET
Gezondheid	441 LVD	103 UGH	104 CGT	104 VRU		
Exterieur	98 FR	100 RB	104 UI	100 BE	102 TOT	

AFSTAMMING



- **Telgter Aikman Doreen RDC GP-83 (v. Aikman RDC)**
- **Holbra Manoa VG-85 (v. Man-O-Man)**
- **Holbra Pam VG-87 (v. Mascol)**
- Lev.prod.: 2062d 73,468kgM 4,46%V 3274kgV 3,57%E 2620kgE
- **Sunday ALH Prudence VG-88 (v. Durham)**
- **Mayerlane-DK Hiawatha EX-90 (v. Rudolph)**
- **Golden-Oaks Mark Prudence EX-95 (v. Chief Mark)**
- Volgende moeder EX-91 Sexation x EX-93 Elevation x EX-94  
Highmark x EX-91 Bootmaker Lee x EX-90 Mingo x VG-85 Star  
Man x VG-86 Rag Apple