



Alida ET VG-86



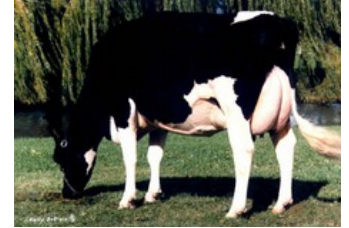
Sandy-Valley IO Amethyst VG-87



Sandy-Valley Plane Sapphire VG-87



Sandy-Valley Bolt Sheila EX-92



Snow-N Denises Dellia EX-95

Gladius x Bali x VG-86 Gymnast x VG-86 Supershot x VG-85 McCutchen x VG-87 Altalota x VG-87 Planet x EX-92 Bolton x VG-87 Forbidden x VG-89 BW Marshall

Extreem hoge RZG kalf

GENOMICS

Genomic index DEU: **+153 GRZG** (2024-09)

Productie	337 M	0.48%V	0.21%E	64 V	34 E	132 RZM
Gezondheid	131 RZN	126 RZS	113 RZR	128 RZGes	2214 RZ€	
Exterieur	102 KÖR	107 MTY	107 EUT	127 FUN	121 RZE	

Genomic index USA: **+2890 GTPI** (2024-08)

Productie	1161 M	0.14%V	0.08%E	82 V	59 E	961 NM
Gezondheid	+5.8 PL	2.62 SCS	+0.6 DPR			
Exterieur	0.70 UDC	0.77 F&L	0.46 PTAT			

Genomic index NLD: **+358 GNV** (2024-04; ZB)

Productie	875 M	0.46%V	0.16%E	82 V	46 E	373 INET
Gezondheid	911 LVD	111 UGH	110 CGT	107 VRU		
Exterieur	94 FR	98 RB	104 UI	96 BE	98 TOT	

AFSTAMMING

