



Cookiecutter GLD Holler VG-88



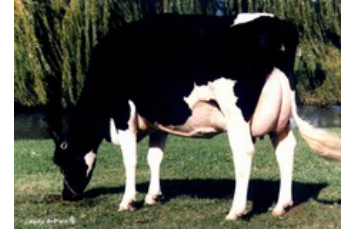
Cookiecutter Ssire Have VG-86



A-L-H-Havanna VG-86



Long-Haven Rudolph Dee EX-90



Snow-N Denises Dellia EX-95

Solution x VG-86 Silver x VG-86 Supersire x VG-88 Man-O-Man x VG-88 Goldwyn x EX-90 Champion x EX-90 Hershel x EX-90 Rudolph x VG-88 Bell Elton x EX-95 Chief Mark

GENOMICS

Genomic index USA: **+2534 GTPI** (2024-04)

Productie	1552 M	0.00%V	0.01%E	60 V	50 E	639 NM
Gezondheid	+2.7 PL	2.93 SCS	-3.8 DPR			
Exterieur	0.96 UDC	0.09 F&L	1.05 PTAT			

Genomic index NLD: **+190 GNVI** (2022-08; ZB)

Productie	2104 M	-0.15%V	-0.04%E	73 V	69 E	468 INET
Gezondheid	519 LVD	97 UGH	99 CGT	96 VRU		
Exterieur	98 FR	102 RB	104 UI	98 BE	101 TOT	

AFSTAMMING

