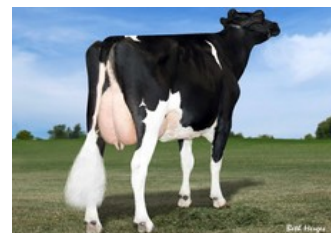




Co-Vista Atwood Desire EX-90



Kemelia V/H Zomerbloemhof VG-87



Scientific Deluxe Rae EX-91



Scientific Debutante Rae EX-92



C Glenridge Citation Roxy EX-97

VG-89 Topnotch x VG-89 Legendary x VG-87 Rubicon x Numero Uno x EX-90 Atwood x EX-91 Shottle x EX-92 Durham x EX-90 Jubilant RF x EX-96 Tony x EX-94 Triple Threat

GENOMICS

Genomic index DEU: **+139 GRZG** (2024-04)

Genomic index USA: **+2600 GTPI** (2024-04)

| | | | | | | |
|------------|---------|---------|---------|-----------|----------|---------|
| Productie | 72 M | 0.45%V | 0.08%E | 50 V | 11 E | 117 RZM |
| Gezondheid | 122 RZN | 126 RZS | 116 RZR | 121 RZGes | 1534 RZ€ | |
| Exterieur | 109 KÖR | 106 MTY | 114 EUT | 120 FUN | 124 RZE | |

| | | | | | | |
|------------|----------|----------|-----------|------|------|--------|
| Productie | 268 M | 0.12%V | 0.04%E | 45 V | 21 E | 597 NM |
| Gezondheid | +6.1 PL | 2.64 SCS | +1.0 DPR | | | |
| Exterieur | 1.22 UDC | 0.61 F&L | 1.16 PTAT | | | |

Genomic index NLD: **+238 GNV** (2021-12; ZB)

| | | | | | | |
|------------|---------|---------|---------|---------|---------|----------|
| Productie | 730 M | 0.43%V | 0.01%E | 72 V | 26 E | 268 INET |
| Gezondheid | 744 LVD | 106 UGH | 112 CGT | 101 VRU | | |
| Exterieur | 99 FR | 101 RB | 106 UI | 101 BE | 104 TOT | |

AFSTAMMING

