



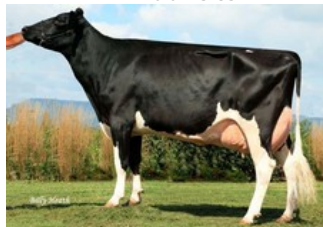
NH HS Missouri Lazifa VG-85



HLM Lulu VG-85



Hellmuth's Planet Lana VG-86



Calbrett Shottle Lea EX-90



Lylehaven Lila Z EX-94

GP-83 Hotspot P x VG-85 Balu x VG-85 Missouri x VG-85 Numero Uno x VG-86 Planet x EX-90 Shottle x EX-94 Durham x EX-94 Formation x EX-94 Starbuck x VG-86 Astro Jet

GENOMICS

Genomic index DEU: **+119 GRZG** (2024-04)

Genomic index NLD: **+295 GNVI** (2021-02; ZB)

|            |         |         |         |           |         |         |
|------------|---------|---------|---------|-----------|---------|---------|
| Productie  | 53 M    | 0.16%V  | 0.18%E  | 18 V      | 21 E    | 114 RZM |
| Gezondheid | 111 RZN | 112 RZS | 112 RZR | 111 RZGes | 910 RZ€ |         |
| Exterieur  | 91 KÖR  | 108 MTY | 107 EUT | 93 FUN    | 100 RZE |         |

|            |         |         |         |         |         |          |
|------------|---------|---------|---------|---------|---------|----------|
| Productie  | 1473 M  | -0.10%V | 0.08%E  | 52 V    | 59 E    | 373 INET |
| Gezondheid | 604 LVD | 105 UGH | 109 CGT | 106 VRU |         |          |
| Exterieur  | 97 FR   | 100 RB  | 110 UI  | 97 BE   | 103 TOT |          |

AFSTAMMING

