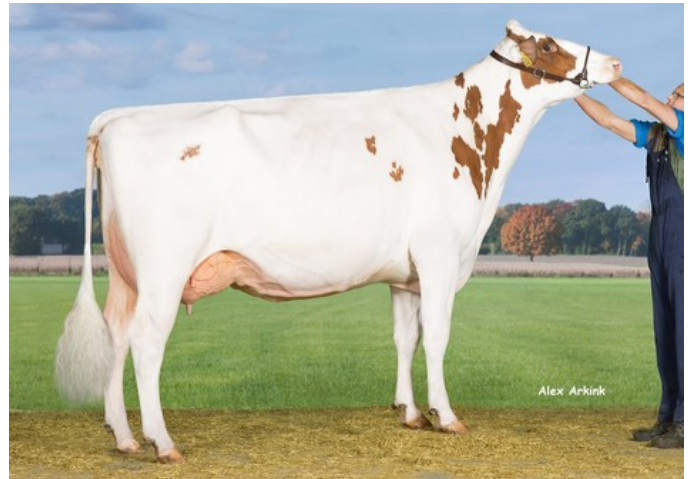




Drouner K&L Aiko 1386 P-Red VG-88



Drouner AJDH Aiko 1267 P-Red EX-90

VG-88 Apoll P Red x EX-90 Kanu P x VG-87 Freddie x EX-91 Goldwyn x EX-95 Durham x EX-93 Prelude x EX-94 Jubilant RF x EX-96 Marquis King x EX-90 Brutus x EX-90 Lucifer Lad

Lovely Apoll P Red daughter of Aiko 1267 P-Red

From the KHW Goldwyn Aiko RC / Kamps-Hollow Durham Altitude family

This cow has a great future

GENOMICS

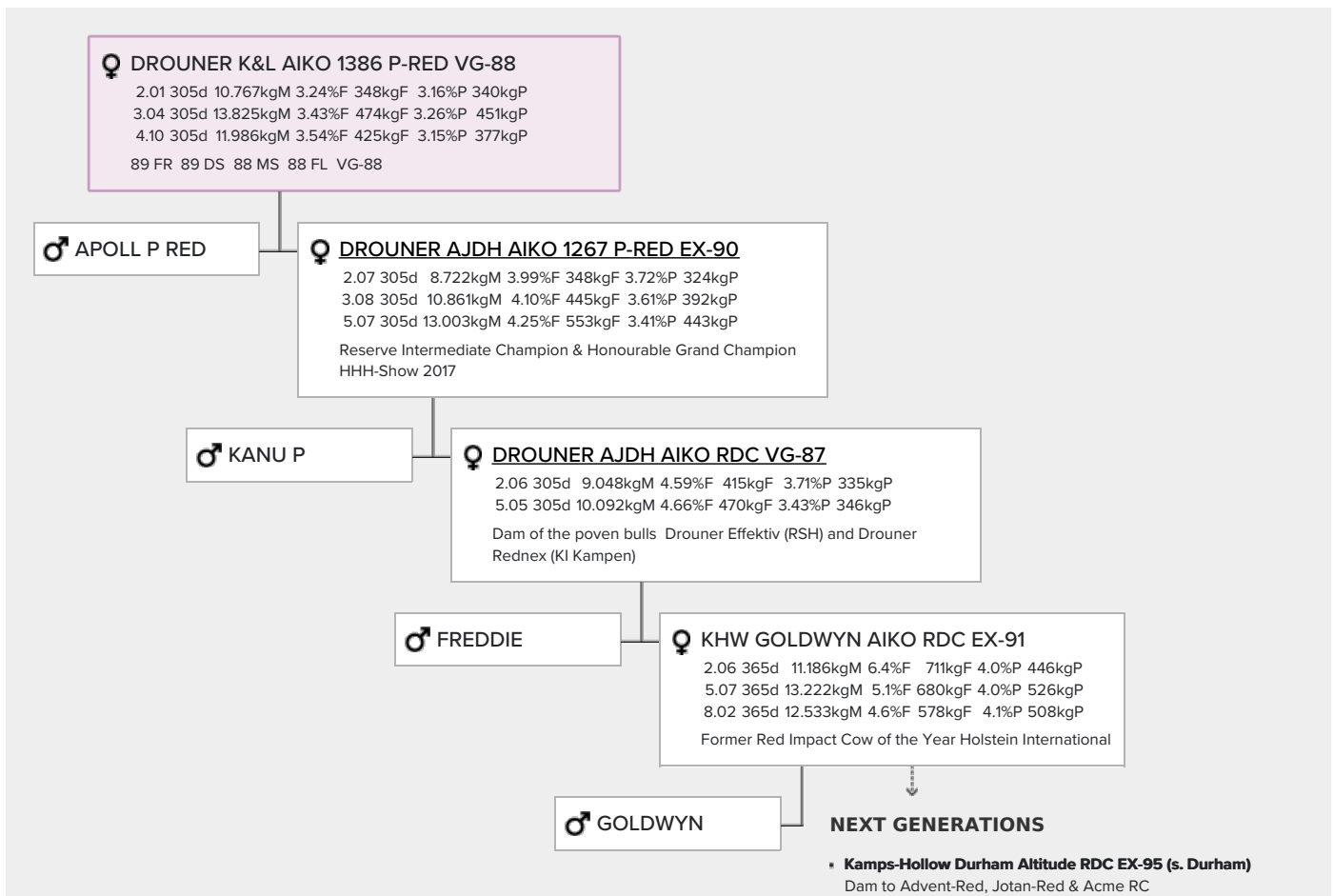
Genomic index DEU: **+107 GRZG** (2024-04)

| | | | | | | |
|------------|---------|---------|---------|-----------|---------|---------|
| Production | 1663 M | -0.55%F | -0.27%P | 8 F | 28 P | 115 RZM |
| Health | 96 RZN | 90 RZS | 90 RZR | 100 RZGes | 314 RZ€ | |
| Type | 107 KÖR | 111 MTY | 101 EUT | 95 FUN | 103 RZE | |

Genomic index NLD: **+190 GNV** (2017-12; R&W)

| | | | | | | |
|------------|---------|---------|---------|--------|---------|----------|
| Production | 2683 M | -0.80%F | -0.36%P | 34 F | 58 P | 345 INET |
| Health | 322 LVD | 97 UGH | 100 CGT | 97 VRU | | |
| Type | 103 FR | 105 RB | 111 UI | 102 BE | 109 TOT | |

PEDIGREE



- **Clover-Mist Alisha RDC EX-93 (s. Prelude)**
- **Clover-Mist Augy Star RDC EX-94 (s. Jubilant RF)**
- **D-R-A August EX-96 (s. Marquis King)**
- **D-R-A Ideal Precious Leader EX-90 (s. Brutus)**
- **D-R-A Princess Lad Leader EX-90 (s. Lucifer Lad)**