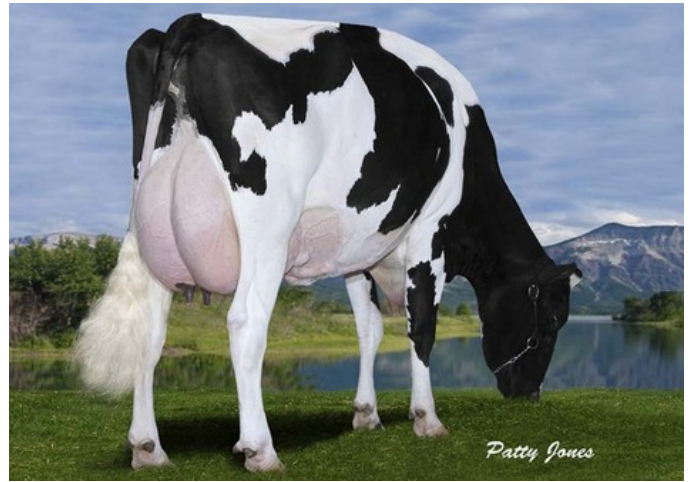




Schreur Serena 7 P VG-85



Gen-I-Beq Goldwyn Secret RC VG-87

VG-85 Silver x GP-83 Earnhardt P x GP-82 Colt P x VG-85 Socrates x VG-87 Goldwyn x VG-87 Durham x VG-86 Formation x VG-88 Aerostar x EX Enhancer x EX Christopher

Polled Silver daughter from the Glen Drummond Splendor family

Lovely pedigree from the same family as Secure & Mr Savage

This family breeds; high in several systems

GENOMICS

Genomic index DEU: **+107 GRZG** (2024-08)

Production	-488 M	0.37%F	0.08%P	17 F	-9 P	100 RZM
Health	103 RZN	100 RZS	111 RZR	104 RZGes	249 RZ€	
Type	93 KÖR	103 MTY	107 EUT	105 FUN	106 RZE	

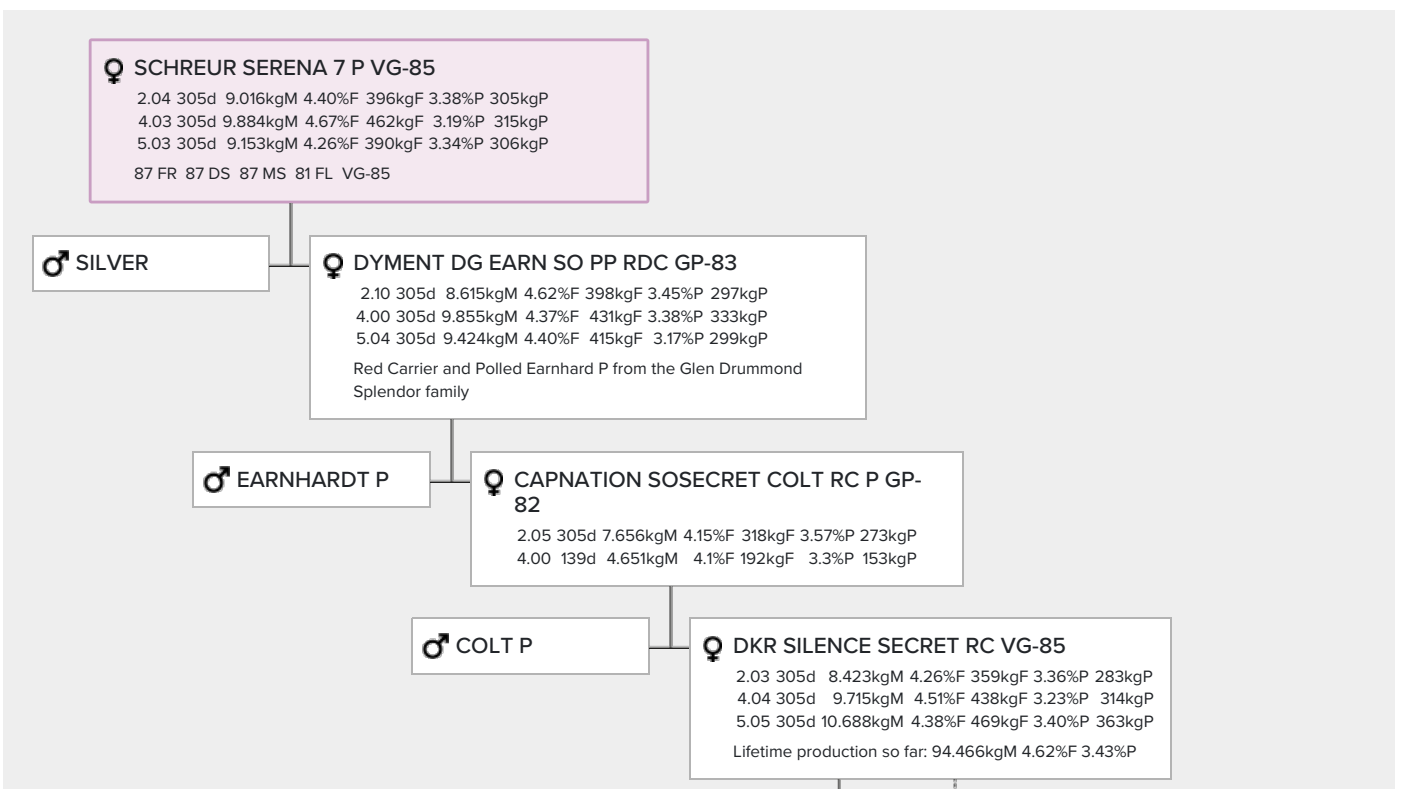
Genomic index USA: **+2286 GTPI** (2024-08)

Production	238 M	0.09%F	0.03%P	32 F	15 P	339 NM
Health	+1.7 PL	2.99 SCS	-0.7 DPR			
Type	0.96 UDC	0.34 F&L	0.46 PTAT			

Genomic index NLD: **+228 GNV** (2017-12; B&W)

Production	819 M	0.22%F	-0.05%P	56 F	24 P	228 INET
Health	635 LVD	104 UGH	105 CGT	101 VRU		
Type	94 FR	101 RB	109 UI	101 BE	104 TOT	

PEDIGREE



NEXT GENERATIONS

- **Gen-1-Beq Goldwyn Secret RC VG-87 (s. Goldwyn)**
Dam to Secure Red & Mr Savage At least six excellent classified daughters Voted Red Impact Cow of the year 2011
- **Gen-1-Beq Durham Sherry VG-87 (s. Durham)**
Granddam of the proven Red bull Schreur Laron P
- **Glen Drummond Splendor VG-86 (s. Formation)**
- **Glen Drummond Aero Flower VG-88 (s. Aerostar)**
x EX-CAN Enhancer x EX-2E-CAN Sir Christopher
- **Glen Drummond Shower EX (s. Enhancer)**
- **Glen Drummond S C Jo Beth EX (s. Christopher)**