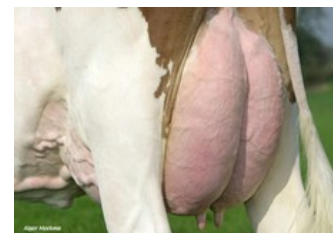




Green-Valley Allure-Red VG-87



Green-Valley Allure-Red VG-87



Green-Valley Allure-Red VG-87



Green-Valley Almere RDC VG-86



Green-Valley Anita VG-89

VG-87 Spencer x VG-86 Canvas x VG-89 Jesther x VG-85 Cash x VG-87 Captain x VG-87 Cleitus x GP-83 Big Al x VG-88 Nugget x EX-94 Arlinda Chief x EX-90 Kingpin  
 Dam to Lostau P, the #1 Proven Polled R&W Bull on RZG (08-2017)!

6 Sons in All!

GENOMICS

Genomic index DEU: **+86 GRZG** (2024-04)

Production	382 M	-0.07%F	0.16%P	9 F	29 P	116 RZM
Health	80 RZN	83 RZS	82 RZR	78 RZGes	-480 RZ€	
Type	91 KÖR	97 MTY	78 EUT	98 FUN	80 RZE	

Genomic index USA: **+1753 GTPi** (2024-04)

Production	690 M	-0.10%F	0.04%P	-3 F	34 P	47 NM
Health	-1.4 PL	3.24 SCS	-2.1 DPR			
Type	-2.54 UDC	-0.79 F&L	-2.48 PTAT			

Genomic index NLD: **+139 GNVI** (2016-04; R&W)

Production	2226 M	-0.49%F	-0.05%P	51 F	74 P	441 INET
Health	146 LVD	98 UGH	98 CGT	93 VRU		
Type	98 FR	96 RB	104 UI	100 BE	101 TOT	

PEDIGREE

