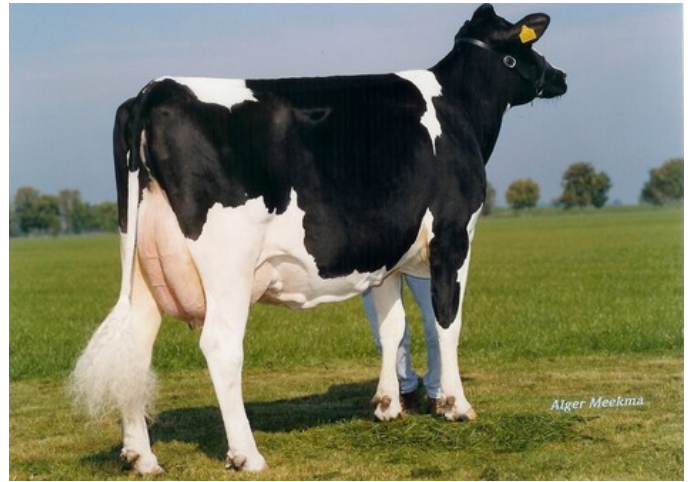




Koepon Oak Classy 4672 GP-83



Koepon Classy VG-86

Redlea RDC x Ranger-Red x VG-86 Crimson x VG-85 Imax x Silver x GP-83 AltaOak x VG-85 Man-O-Man x VG-85 Shottle x VG-86 Simon x VG-86 Merrill

GENOMICS

Genomic index USA: **+3083 GTPI** (2024-08)

|            |          |          |           |       |      |         |
|------------|----------|----------|-----------|-------|------|---------|
| Production | 1962 M   | 0.12%F   | 0.04%P    | 108 F | 72 P | 1222 NM |
| Health     | +6.8 PL  | 2.72 SCS | -2.0 DPR  |       |      |         |
| Type       | 1.27 UDC | 0.88 F&L | 1.21 PTAT |       |      |         |

Genomic index NLD: **+356 GNV** (2024-08; B&W)

|            |         |         |         |         |         |          |
|------------|---------|---------|---------|---------|---------|----------|
| Production | 2081 M  | 0.12%F  | -0.06%P | 101 F   | 66 P    | 587 INET |
| Health     | 995 LVD | 105 UGH | 107 CGT | 101 VRU |         |          |
| Type       | 92 FR   | 96 RB   | 107 UI  | 101 BE  | 101 TOT |          |

PEDIGREE

