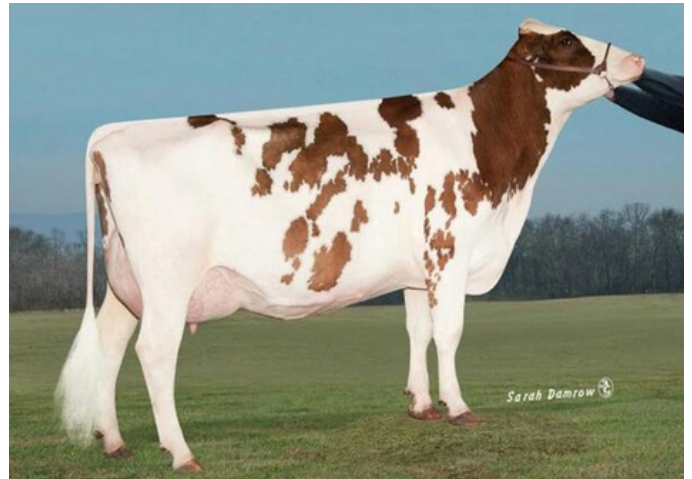




Islehaven Gold Dancer-Red VG-88



Stoneden Snowman Red Desire VG-86

Foundation RDC x Ranger-Red x Pursuit x Pine-Tree Splendid-P x Denver x Jabir x VG-86 Snowman x VG-88 Goldwyn x VG-85 Lee x EX-90 Charles

- Red Foundation RDC daughter with a lot of milk, positive components and positive DPR score.
- One of the few, tested, European daughters of sire Foundation.

GENOMICS

Genomic index USA: +2861 GTPI (2024-08)

Production	1280 M	0.10%F	0.07%P	76 F	59 P	880 NM
Health	+5.4 PL	2.80 SCS	+0.2 DPR			
Type	1.21 UDC	0.40 F&L	1.03 PTAT			

PEDIGREE

