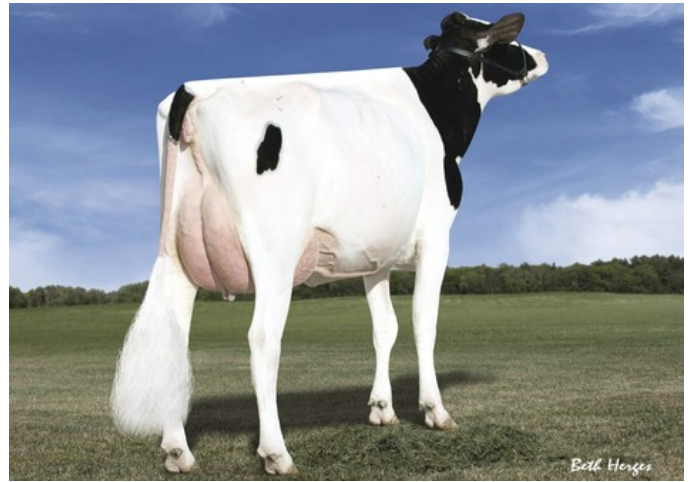




K&L SV Sunny Red GP-84



Des-Y-Gen Planet Silk EX-90

Mask Red x GP-81 Ranger-Red x VG-87 Mark RDC x GP-84 Salvatore Rc x Rubicon x GP-83 Cashcoin x VG-87 Snowman x EX-90 Planet x VG-85 Bolton x VG-87 Goldwyn

From the famous bull dam family!

GENOMICS

Genomic index DEU: **+151 GRZG** (2024-09)

| | | | | | | |
|------------|---------|---------|---------|-----------|----------|---------|
| Production | 1992 M | -0.25%F | -0.16%P | 53 F | 51 P | 137 RZM |
| Health | 120 RZN | 120 RZS | 107 RZR | 123 RZGes | 2097 RZ€ | |
| Type | 111 KÖR | 113 MTY | 109 EUT | 119 FUN | 123 RZE | |

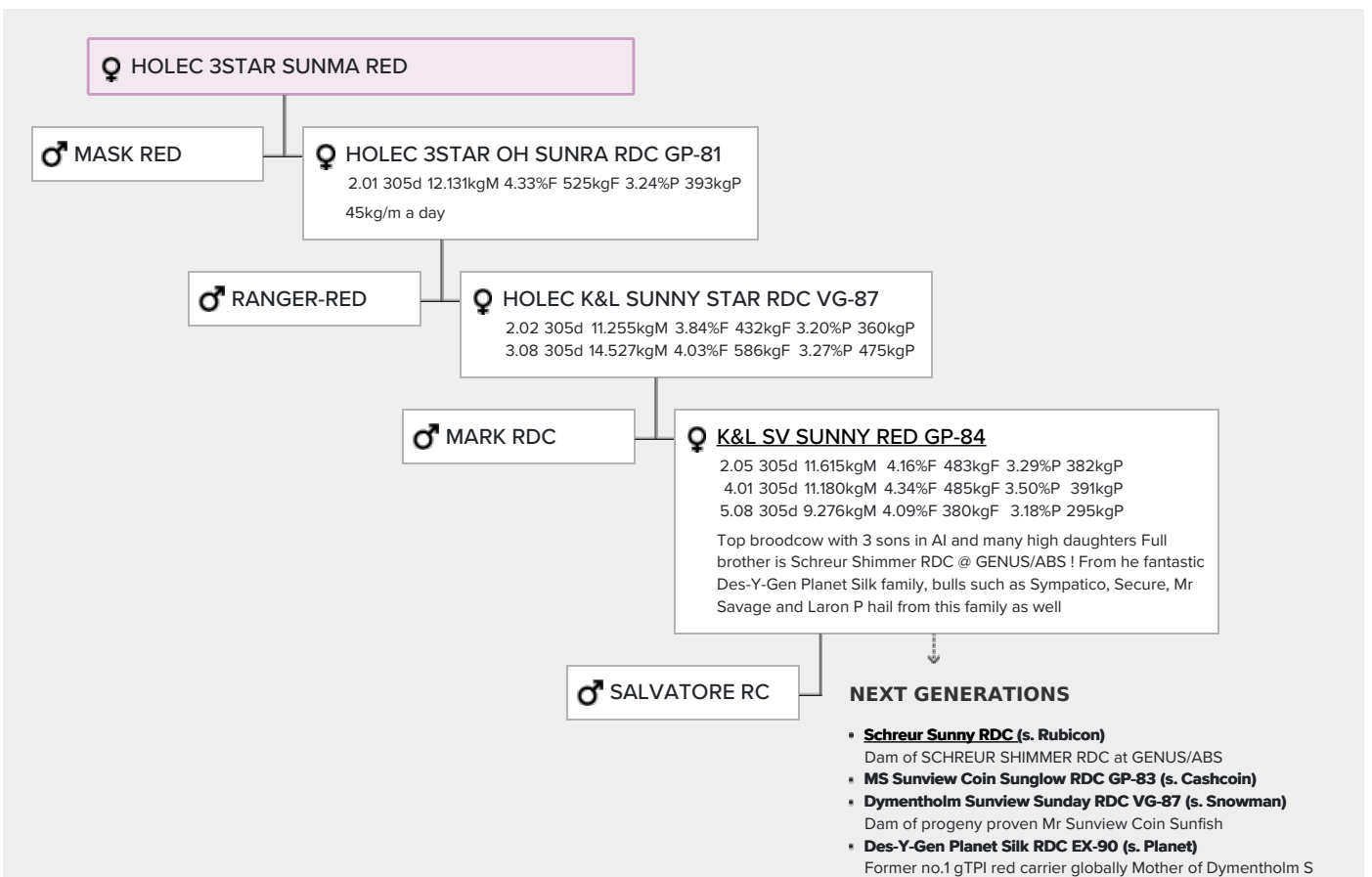
Genomic index USA: **+2590 GTPI** (2024-08)

| | | | | | | |
|------------|----------|----------|-----------|------|------|--------|
| Production | 1382 M | -0.06%F | -0.01%P | 38 F | 42 P | 626 NM |
| Health | +4.7 PL | 2.74 SCS | -0.7 DPR | | | |
| Type | 1.06 UDC | 0.28 F&L | 0.96 PTAT | | | |

Genomic index NLD: **+312 GNVI** (2024-08; R&W)

| | | | | | | |
|------------|---------|---------|---------|---------|---------|----------|
| Production | 2638 M | -0.52%F | -0.26%P | 62 F | 67 P | 474 INET |
| Health | 989 LVD | 105 UGH | 107 CGT | 103 VRU | | |
| Type | 102 FR | 103 RB | 109 UI | 102 BE | 107 TOT | |

PEDIGREE



Sympatico Dam of Dymentholm S Sympatico who was one of the highest gTPI & gLPI bulls. Sold for \$1.000.000 as an 2-yr-old together with offspring!

- **Gen-1-Beq Bolton Silence RDC VG-85 (s. Bolton)**

Sons in AI, such as Des-Y-Gen Santos & Des-Y-Gen Solero Full sister to Silence, sold for \$ 104.000

- **Gen-1-Beq Goldwyn Secret RC VG-87 (s. Goldwyn)**

Dam to Secure Red & Mr Savage At least six excellent classified daughters Voted Red Impact Cow of the year 2011