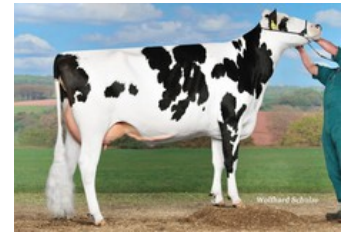




Amber PP Red VG-86



Aida RDC VG-86



Teemar Observer Airline VG-85



Teemar Shottle Aloha VG-88



Dixie-Lee Aspen EX-92

Enclave x Sinan PP x VG-86 Solitair P Red x VG-85 Abi Red PP x VG-87 Powerball-P x VG-86 Snow RF x VG-85 Observer x VG-88 Shottle x VG-87 O Man x VG-86 BW Marshall

No. 1 polled B&W gNVI 4-2024

GENOMICS

Genomic index DEU: +143 GRZG (2024-09)

Production	1102 M	0.01%F	-0.05%P	45 F	32 P	126 RZM
Health	125 RZN	129 RZS	107 RZR	123 RZGes	1877 RZ€	
Type	96 KÖR	103 MTY	117 EUT	103 FUN	113 RZE	

Genomic index USA: +2828 GTPI (2024-08)

Production	1297 M	0.05%F	0.04%P	62 F	52 P	925 NM
Health	+7.5 PL	2.52 SCS	-0.7 DPR			
Type	1.32 UDC	0.46 F&L	0.76 PTAT			

Genomic index NLD: +331 GNVI (2024-08; B&W)

Production	1774 M	-0.14%F	-0.12%P	60 F	49 P	391 INET
Health	1229 LVD	111 UGH	111 CGT	103 VRU		
Type	100 FR	101 RB	108 UI	99 BE	104 TOT	

PEDIGREE

