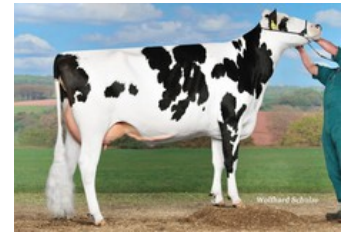




3STAR Amber 0364 P RDC



Aida RDC VG-86



Teemar Observer Airline VG-85



Teemar Shottle Aloha VG-88



Amber PP Red VG-86

Sino P x Sinan PP x VG-86 Solitair P Red x VG-85 Abi Red PP x VG-87 Powerball-P x VG-86 Snow RF x VG-85 Observer x VG-88 Shottle x VG-87 O Man x VG-86 BW Marshall

- Scores even a higher NVI on R&W Basis!
- Her maternal sister is sold to CRV

GENOMICS

Genomic index DEU: **+148 GRZG** (2024-04)

Production	1208 M	-0.03%F	-0.04%P	44 F	37 P	128 RZM
Health	128 RZN	127 RZS	104 RZR	128 RZGes	1971 RZ€	
Type	98 KÖR	97 MTY	115 EUT	110 FUN	115 RZE	

Genomic index NLD: **+299 GNV** (2024-04; B&W)

Production	1755 M	-0.14%F	-0.11%P	60 F	49 P	346 INET
Health	1055 LVD	109 UGH	108 CGT	103 VRU		
Type	101 FR	102 RB	108 UI	101 BE	105 TOT	

PEDIGREE

