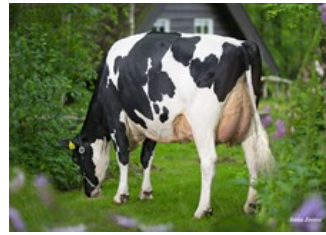




Quatropoint K&L SW Roseanne VG-85



De Oosterhof Dg Rose RDC VG-89



Holbra Manoa VG-85



Holbra Mascol Pam VG-87



Sunday ALH Prudence VG-88

Augustus P Red x VG-85 Swingman Red x VG-89 Rubicon x GP-83 Aikman RDC x VG-85 Man-O-Man x VG-87 Mascol x VG-88 Durham x EX-90 Rudolph x EX-95 Chief Mark x EX-91 Sexation

Beautiful Augustus P Red out of the maternal-sister of bull dam Red Range

GENOMICS

Genomic index NLD: **+251 GNV** (2024-08; R&W)

Production	1210 M	-0.05%F	0.03%P	49 F	46 P	345 INET
Health	623 LVD	108 UGH	109 CGT	103 VRU		
Type	94 FR	100 RB	108 UI	100 BE	102 TOT	

PEDIGREE

