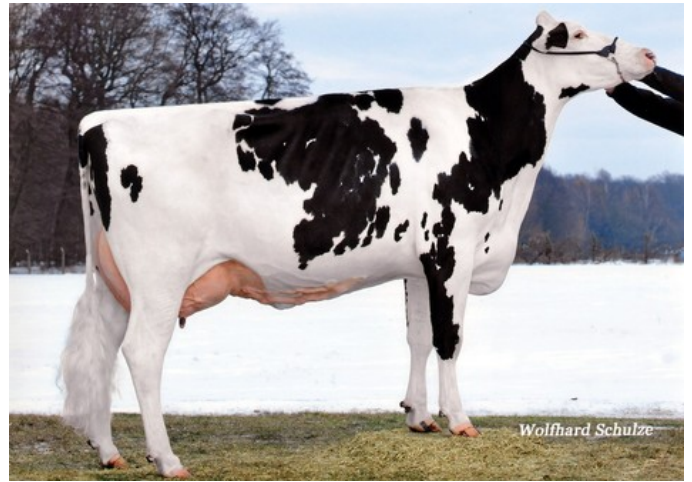




KNS Goldencross VG-85



KNS Goldengate EX-91

Galaxy x VG-85 Man-O-Man x EX-91 Goldwyn x VG-88 Shottle x EX-90 Skywalker x EX-90 Corsaro

From the Blossom (#1 GNVI 04-2015) family

Dam is a Man O Man half-sister to the dam of Blossom

Great heifer from a family that breeds

GENOMICS

Genomic index DEU: **+103 GRZG** (2024-08)

Production	453 M	-0.12%F	-0.03%P	5 F	12 P	107 RZM
Health	100 RZN	107 RZS	100 RZR	98 RZGes	167 RZE	
Type	107 KÖR	98 MTY	100 EUT	88 FUN	96 RZE	

Genomic index USA: **+2012 GTPi** (2024-08)

Production	732 M	-0.11%F	0.00%P	-2 F	22 P	67 NM
Health	+0.3 PL	2.90 SCS	-1.6 DPR			
Type	0.18 UDC	-0.77 F&L	0.04 PTAT			

PEDIGREE

