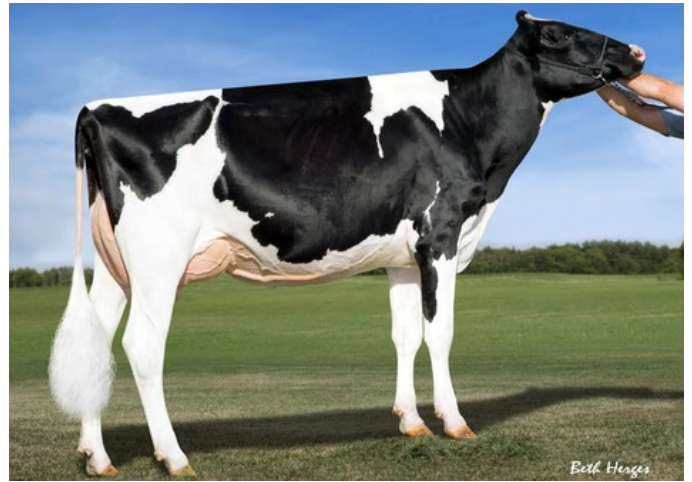




Tramilda KNS Cutchen VG-88



Pencroft-Ammon G Chiffon EX-90

VG-88 McCutchen x EX-90 Gold Chip x EX-92 Mac x VG-87 Titanic x EX-92 Durham x EX-90 Airliner x GP-82 Ambition

Great pedigree for high type

Dam is one of the first excellent Gold Chip daughters

GENOMICS

Genomic index DEU: **+105 GRZG** (2024-08)

Production	-363 M	0.35%F	-0.01%P	21 F	-14 P	98 RZM
Health	99 RZN	109 RZS	103 RZR	101 RZGes	75 RZ€	
Type	105 KÖR	115 MTY	120 EUT	102 FUN	121 RZE	

Genomic index USA: **+2341 GTPI** (2024-08)

Production	-203 M	0.16%F	0.03%P	33 F	1 P	187 NM
Health	+0.6 PL	2.82 SCS	+0.3 DPR			
Type	1.63 UDC	1.35 F&L	2.10 PTAT			

PEDIGREE

