



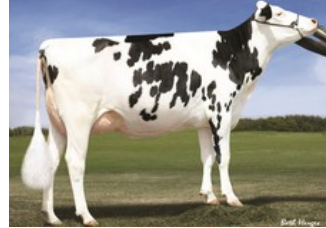
Bacon-Hill Salvatore Kay RDC GP-82



Bacon-Hill Delta Kansas-ET VG-88



Ms Kool Coin2324 VG-87



Ms C-Haven Oman Kool-ET VG-88



Art-Acres Kay721-ET EX-90

Camden x Crown-Red x GP-82 Salvatore Rc x VG-88 Delta x VG-87 Cashcoin x VG-88 Man-O-Man x EX-90 Shottle x VG-88 BW Marshall x VG-87 Patron x VG-87 Aerostar

High RZG, NVI and GTPI daughter of bullmother Bacon-Hill Crown Kay Red

GENOMICS

Genomic index DEU: **+151 GRZG** (2024-09)

Production	1661 M	-0.01%F	0.00%P	66 F	57 P	143 RZM
Health	120 RZN	122 RZS	103 RZR	115 RZGes	2144 RZ€	
Type	100 KÖR	124 MTY	121 EUT	110 FUN	126 RZE	

Genomic index USA: **+2817 GTPI** (2024-08)

Production	1435 M	0.02%F	0.05%P	60 F	60 P	884 NM
Health	+5.7 PL	2.67 SCS	-0.9 DPR			
Type	1.82 UDC	0.74 F&L	1.35 PTAT			

Genomic index NLD: **+318 GNVI** (2024-04; R&W)

Production	2152 M	-0.19%F	-0.07%P	76 F	70 P	477 INET
Health	498 LVD	105 UGH	110 CGT	102 VRU		
Type	92 FR	102 RB	112 UI	104 BE	106 TOT	

PEDIGREE

