



Koepon Duke Ruby 14 VG-85



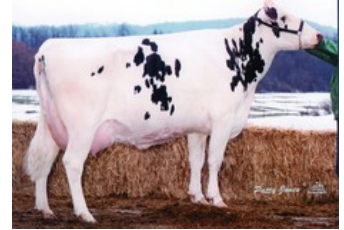
Koepon Bkm Regenia 104 VG-86



Koepon Col Regenia 37 EX-90



Koepon Stormatic Reginia VG-89



Sher-Est Emory Swanny EX-90

Cartoon P Red x VG-87 AltaTop-Red x VG-85 Duke x Rubicon x VG-86 Jabir x VG-86 Bookem x EX-90 Colby x VG-86 Shottle x VG-89 Stormatic x EX-92 Durham

Ruby 98 P RDC is a Cartoon P Red with a huge production potential. Also favorable fertility score.

Her dam is well developed, classified VG-87 (VG-88 MS) and produces great! Foundation cow is the great Regan-Joy Durham Regenia EX-92, known from breeding bulls such as Peak AltaZarek and Koepon Peak Tosco.

GENOMICS

Genomic index DEU: **+137 GRZG** (2024-09)

Production	353 M	0.23%F	0.05%P	38 F	17 P	117 RZM
Health	121 RZN	114 RZS	109 RZR	122 RZGes	1470 RZE	
Type	96 KÖR	103 MTY	118 EUT	113 FUN	119 RZE	

Genomic index USA: **+2648 GTPI** (2024-08)

Production	840 M	0.10%F	0.04%P	58 F	36 P	699 NM
Health	+5.3 PL	2.78 SCS	-0.6 DPR			
Type	1.17 UDC	0.71 F&L	0.79 PTAT			

Genomic index NLD: **+266 GNV** (2024-08; B&W)

Production	1333 M	0.00%F	-0.09%P	57 F	37 P	330 INET
Health	916 LVD	106 UGH	106 CGT	105 VRU		
Type	101 FR	106 RB	112 UI	96 BE	105 TOT	

PEDIGREE

