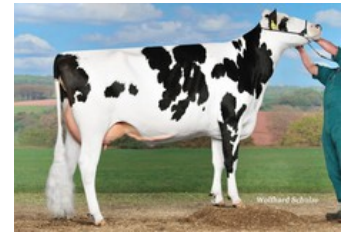




Amber PP Red VG-86



Aida RDC VG-86



Teemar Observer Airline VG-85



Teemar Shottle Aloha VG-88



Dixie-Lee Aspen EX-92

Sinan PP x VG-86 Solitair P Red x VG-85 Abi Red PP x VG-87 Powerball-P x VG-86 Snow RF x VG-85 Observer x VG-88 Shottle x VG-87 O Man x VG-86 BW Marshall x VG-85 Tesk Terry

- High RZG homozygous polled maternal sister to Member PP Red, Ambo P Red and Ranking P Red! Due august 2024
- PP, BB, A2A2 and RDC!

GENOMICS

Genomic index DEU: **+144 GRZG** (2024-04)

| | | | | | | |
|------------|---------|---------|---------|-----------|----------|---------|
| Production | 1141 M | -0.01%F | -0.02%P | 44 F | 37 P | 128 RZM |
| Health | 123 RZN | 126 RZS | 98 RZR | 122 RZGes | 1705 RZ€ | |
| Type | 100 KÖR | 109 MTY | 118 EUT | 116 FUN | 124 RZE | |

Genomic index NLD: **+268 GNV** (2024-04; B&W)

| | | | | | | |
|------------|----------|---------|---------|--------|---------|----------|
| Production | 1470 M | -0.08%F | -0.09%P | 54 F | 42 P | 307 INET |
| Health | 1044 LVD | 109 UGH | 108 CGT | 99 VRU | | |
| Type | 99 FR | 101 RB | 108 UI | 101 BE | 105 TOT | |

PEDIGREE

