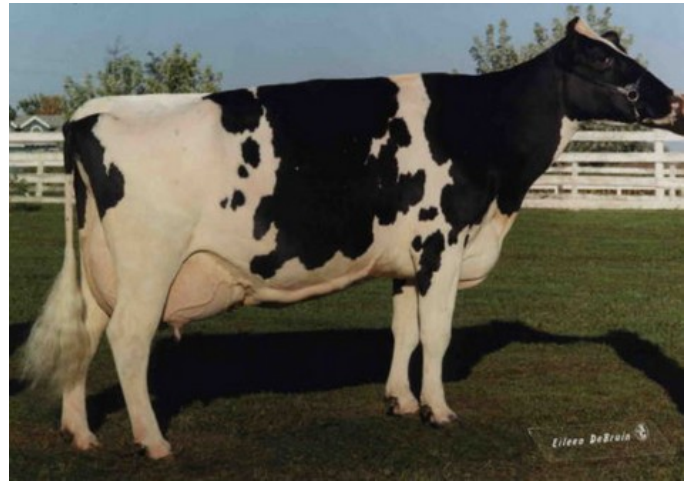




De Oosterhof Dg Rose RDC VG-89



Golden-Oaks Mark Prudence EX-95

Freestyle-Red x GP-83 Andy-Red x GP-82 Apprentice RDC x VG-89 Rubicon x GP-83 Aikman RDC x VG-85 Man-O-Man x VG-87 Mascol x VG-88 Durham x EX-90 Rudolph x EX-95 Chief Mark

GENOMICS

Genomic index DEU: **+144 GRZG** (2024-04)

Production	1639 M	-0.07%F	-0.05%P	59 F	51 P	139 RZM
Health	112 RZN	116 RZS	104 RZR	122 RZGes	1958 RZE	
Type	111 KÖR	108 MTY	101 EUT	107 FUN	110 RZE	

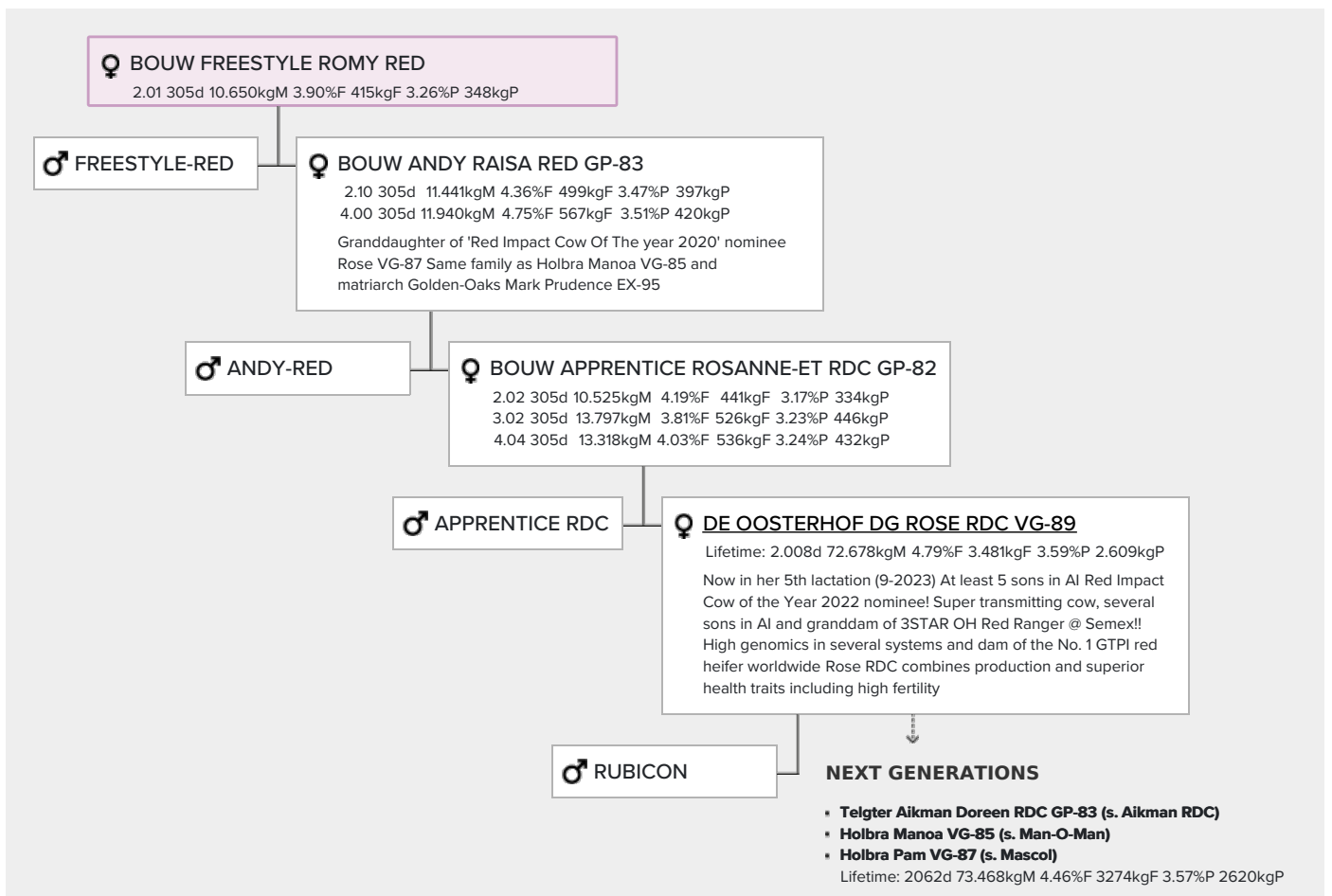
Genomic index USA: **+2589 GTPI** (2024-05)

Production	1154 M	0.01%F	0.03%P	47 F	45 P	640 NM
Health	+4.7 PL	2.71 SCS	+0.7 DPR			
Type	-0.27 UDC	0.57 F&L	0.21 PTAT			

Genomic index NLD: **+299 GNV** (2023-08; R&W)

Production	2686 M	-0.29%F	-0.22%P	89 F	72 P	519 INET
Health	441 LVD	103 UGH	104 CGT	104 VRU		
Type	98 FR	100 RB	104 UI	100 BE	102 TOT	

PEDIGREE



- **Sunday ALH Prudence VG-88 (s. Durham)**
 - **Mayerlane-DK Hiawatha EX-90 (s. Rudolph)**
 - **Golden-Oaks Mark Prudence EX-95 (s. Chief Mark)**
- Next dam EX-91 Sexation x EX-93 Elevation x EX-94 Highmark x
EX-91 Bootmaker Lee x EX-90 Mingo x VG-85 Star Man x VG-86
Rag Apple