



Willsbro Lambda Amber 195 GRZ VG-88



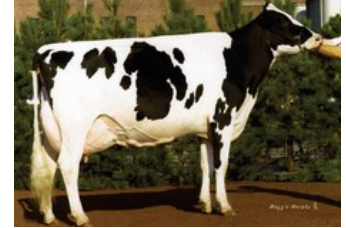
Ridgefield Gold Atlee VG-89



MD Delight Durham Atlee (2) EX-92



MS Kingstead Chief Adeen EX-94



Aitkenbrae Starbuck Ada EX-94

Doc x VG-88 Delta-Lambda x EX-90 Granite x EX-90 Saloon x EX-92 Shottle x VG-89 Goldwyn x EX-92 Durham x VG-88 Storm x EX-94 Skychief x EX-94 Starbuck

GENOMICS

Genomic index USA: **+2880 GTPI** (2024-08)

| | | | | | | |
|------------|----------|----------|-----------|------|------|--------|
| Production | 1622 M | 0.05%F | 0.00%P | 75 F | 50 P | 725 NM |
| Health | +4.1 PL | 2.86 SCS | -1.1 DPR | | | |
| Type | 2.41 UDC | 1.75 F&L | 2.81 PTAT | | | |

PEDIGREE

