



Cookiecutter GLD Holler VG-88



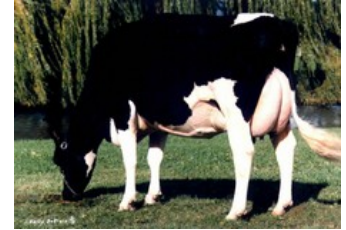
Cookiecutter Ssire Have VG-86



A-L-H-Havanna VG-86



Long-Haven Rudolph Dee EX-90



Snow-N Denises Dellia EX-95

Solution x VG-86 Silver x VG-86 Supersire x VG-88 Man-O-Man x VG-88 Goldwyn x EX-90 Champion x EX-90 Hershel x EX-90 Rudolph x VG-88 Bell Elton x EX-95 Chief Mark

GENOMICS

Genomic index USA: **+2555 GTPI** (2024-08)

Production	1605 M	0.00%F	0.01%P	61 F	53 P	646 NM
Health	+2.4 PL	2.94 SCS	-4.0 DPR			
Type	1.04 UDC	0.03 F&L	1.17 PTAT			

Genomic index NLD: **+190 GNVI** (2022-08; B&W)

Production	2104 M	-0.15%F	-0.04%P	73 F	69 P	468 INET
Health	519 LVD	97 UGH	99 CGT	96 VRU		
Type	98 FR	102 RB	104 UI	98 BE	101 TOT	

PEDIGREE

