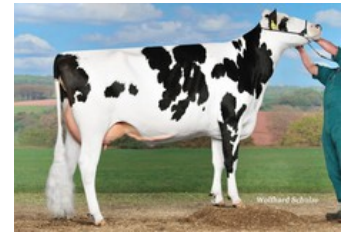




Amber PP Red VG-86



Aida RDC VG-86



Teemar Observer Airline VG-85



Teemar Shottle Aloha VG-88



Dixie-Lee Aspen EX-92

VG-86 Solitair P Red x VG-85 Abi Red PP x VG-87 Powerball-P x VG-86 Snow RF x VG-85 Observer x VG-88 Shottle x VG-87 O Man x VG-86 BW Marshall x VG-85 Tesk Terry x EX-92 Mascot

Average daily production of >38,5 kgM. Amber PP already delivered several extremely high bulls, like Member PP Red & Ranking P Red @PHX and Ambo P Red @SEMEX!

GENOMICS

Genomic index DEU: **+136 GRZG** (2024-04)

Production	1040 M	0.15%F	0.07%P	58 F	43 P	135 RZM
Health	110 RZN	115 RZS	102 RZR	106 RZGes	1470 RZ€	
Type	102 KÖR	119 MTY	115 EUT	115 FUN	124 RZE	

Genomic index USA: **+2597 GTPI** (2024-04)

Production	791 M	0.06%F	0.06%P	49 F	42 P	657 NM
Health	+3.8 PL	2.86 SCS	-1.7 DPR			
Type	1.28 UDC	1.32 F&L	1.01 PTAT			

Genomic index NLD: **+246 GNV** (2022-08; R&W)

Production	1806 M	0.01%F	-0.04%P	82 F	61 P	448 INET
Health	523 LVD	101 UGH	107 CGT	99 VRU		
Type	100 FR	104 RB	111 UI	101 BE	107 TOT	

PEDIGREE

