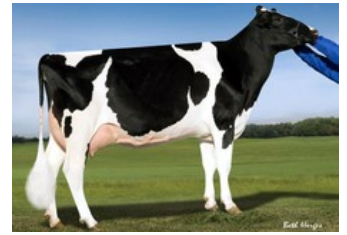




View-Home Mcc Found VG-88



View-Home Mcc Found VG-88



Pine-Tree 2149Robst 4846 VG-87



Pine-Tree Missy Miranda VG-86



Wesswood-HC Rudy Missy EX-92

VG-86 Dynamo x VG-87 Gatedancer x VG-85 Silver x VG-88 McCutchen x VG-87 Robust x VG-87 Zenith x VG-86 Shottle x VG-86 O Man x EX-92 Rudolph x EX-90 Bell Elton

- Famous Wesswood-HC Rudy Missy EX-92 family

GENOMICS

Genomic index DEU: +132 GRZG (2024-04)

Production	862 M	0.22%F	0.00%P	58 F	29 P	128 RZM
Health	111 RZN	105 RZS	102 RZR	109 RZGes	1387 RZ€	
Type	109 KÖR	109 MTY	110 EUT	103 FUN	113 RZE	

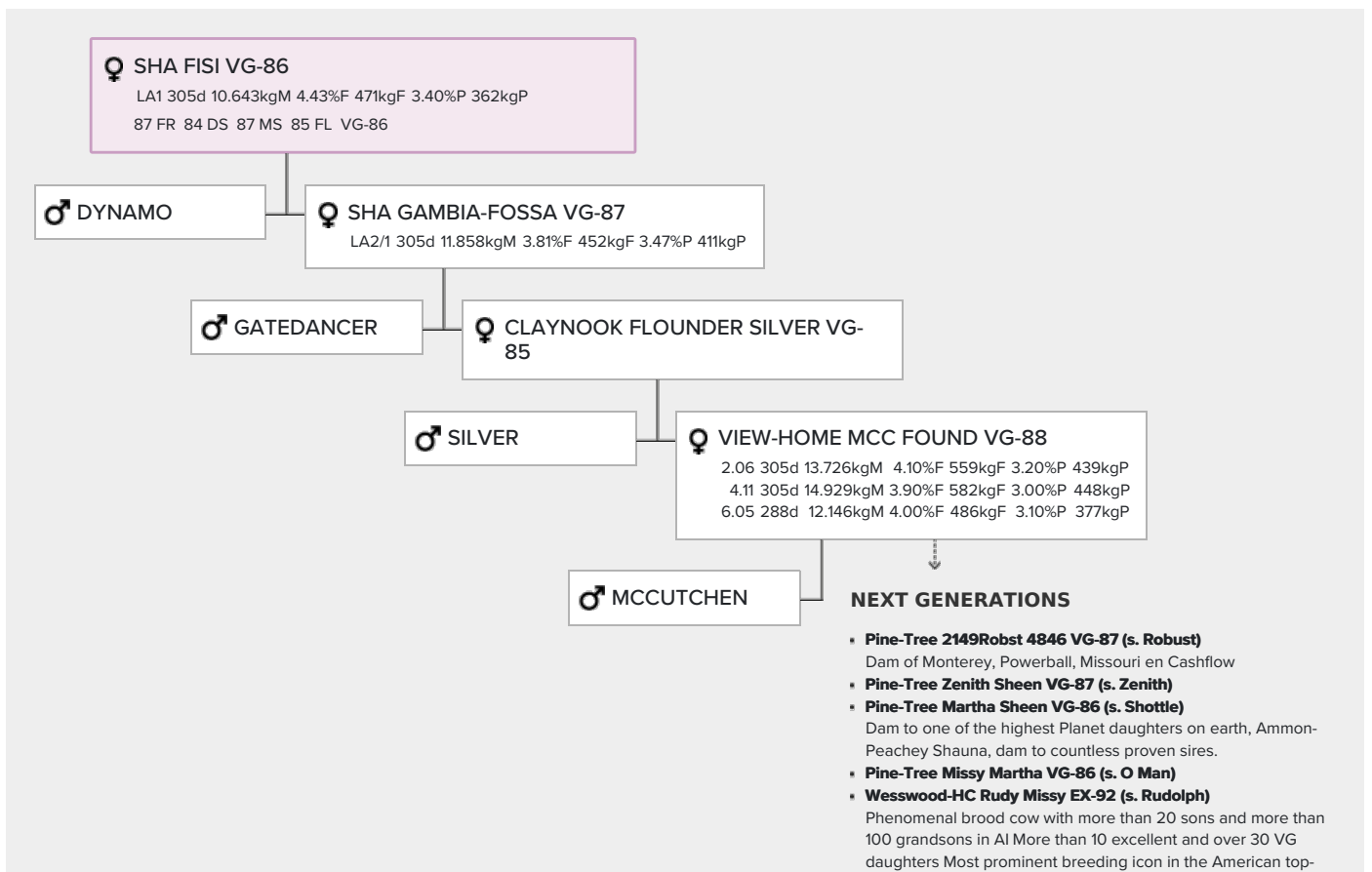
Genomic index USA: +2764 GTPi (2024-04)

Production	1487 M	0.04%F	0.03%P	68 F	54 P	808 NM
Health	+4.0 PL	2.89 SCS	-1.8 DPR			
Type	1.72 UDC	0.54 F&L	1.12 PTAT			

Genomic index NLD: +240 GNVi (2022-04; B&W)

Production	1903 M	-0.08%F	-0.08%P	72 F	58 P	415 INET
Health	406 LVD	102 UGH	109 CGT	103 VRU		
Type	98 FR	101 RB	106 UI	101 BE	103 TOT	

PEDIGREE



100 TPI sire list of 4-2023 Foundation behind numerous of bulls,
such as Seagull Bay Supersire, Silver, Sargeant, Headliner,
Platinum, Monterey, Balisto, Powerball & Missouri

- **Wesswood Elton Mimi EX-90 (s. Bell Elton)**