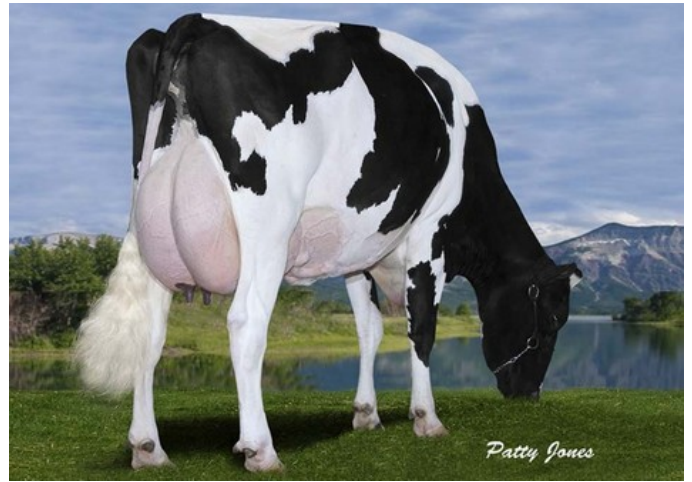




Gen-I-Beq Goldwyn Secret RC VG-87



Gen-I-Beq Goldwyn Secret RC VG-87

GP-84 Argus P Red x VG-85 Silver x GP-83 Earnhardt P x GP-82 Colt P x VG-85 Socrates x VG-87 Goldwyn x VG-87 Durham x VG-86 Formation x VG-88 Aerostar x EX Enhancer

High GRZG Argus daughter

From the Gen-I-Beq Goldwyn Secret / Glen Drummond Splendor family

High production and high fertility

GENOMICS

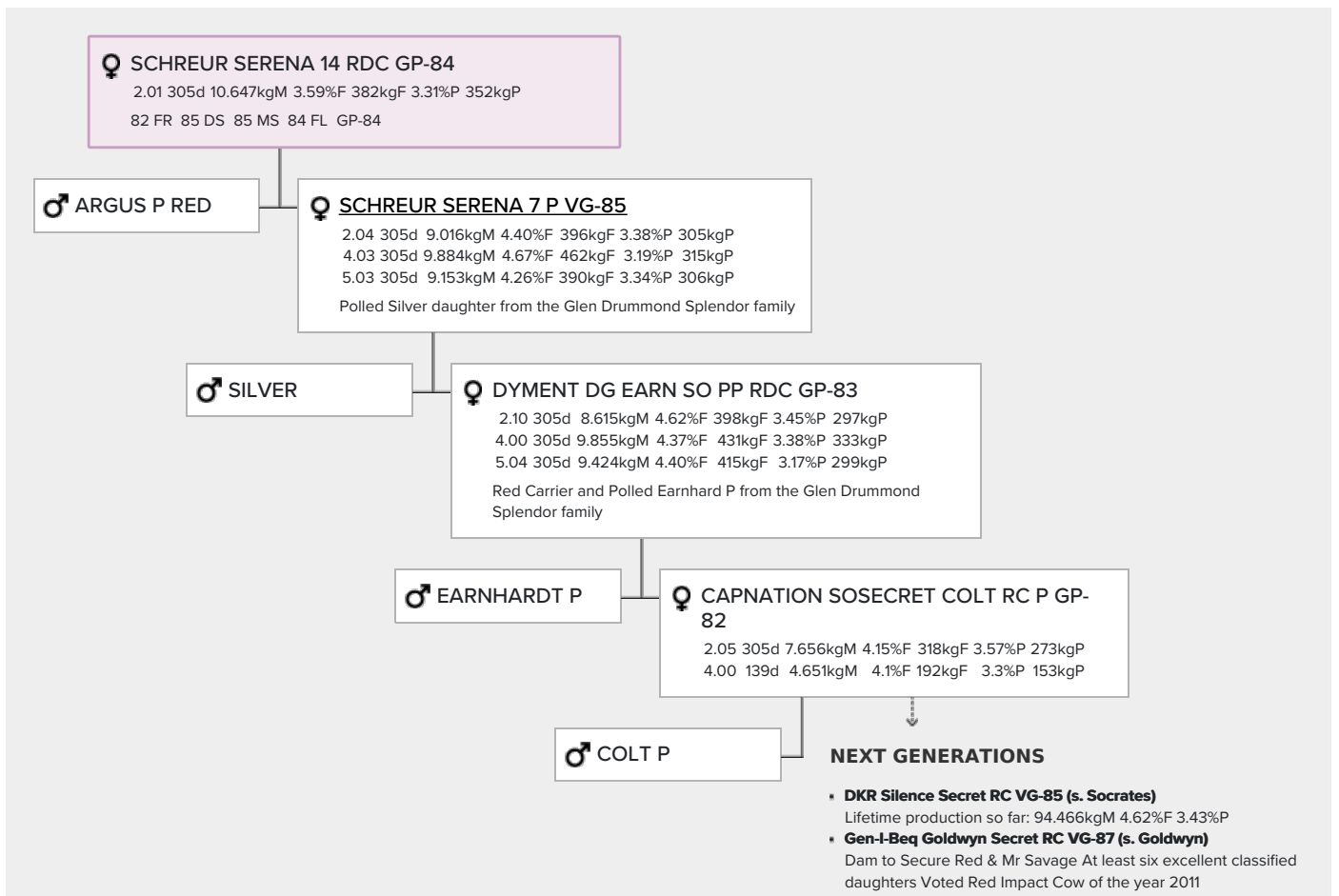
Genomic index DEU: **+118 GRZG** (2024-08)

Production	1104 M	-0.06%F	-0.09%P	37 F	27 P	122 RZM
Health	106 RZN	112 RZS	107 RZR	98 RZGes	912 RZE	
Type	101 KÖR	112 MTY	99 EUT	102 FUN	104 RZE	

Genomic index NLD: **+186 GNVI** (2020-04; B&W)

Production	1936 M	-0.14%F	-0.18%P	67 F	48 P	364 INET
Health	318 LVD	100 UGH	105 CGT	102 VRU		
Type	100 FR	101 RB	101 UI	97 BE	99 TOT	

PEDIGREE



- **Gen-I-Beq Durham Sherry VG-87 (s. Durham)**
Granddam of the proven Red bull Schreur Laron P
- **Glen Drummond Splendor VG-86 (s. Formation)**
- **Glen Drummond Aero Flower VG-88 (s. Aerostar)**
x EX-CAN Enhancer x EX-2E-CAN Sir Christopher
- **Glen Drummond Shower EX (s. Enhancer)**