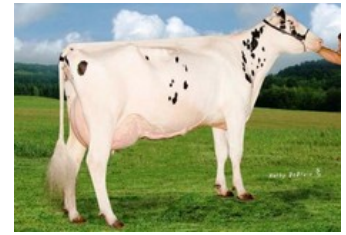




Verhages Bos Candlelight P Red VG-86



K&L BL Candle P RDC



Ri-Val-Re Shtl Calarie VG-87



S-F-L Enhancer Scarlett-Red VG-89



Stookey Fgn Scarlet-Red EX-94

GP-83 Euclid x Balisto x VG-86 Lawn Boy P-Red x VG-87 Shottle x VG-87 Marmax x VG-86 Patron x VG-87 Aerostar x VG-89 Enhancer x EX-94 Fagin x EX-95 Crystan

High GTPI + RZG polled granddaughter of Verhages Bos Candlelight P Red

Her dam is a Balisto sister to Schreur Apoll P Red

Allround genomics on both German and US basis

GENOMICS

Genomic index DEU: **+121 GRZG** (2024-08)

Production	-197 M	0.30%F	0.09%P	23 F	3 P	107 RZM
Health	116 RZN	111 RZS	107 RZR	115 RZGes	886 RZE	
Type	109 KÖR	114 MTY	110 EUT	96 FUN	111 RZE	

Genomic index USA: **+2557 GTPI** (2024-08)

Production	347 M	0.10%F	0.05%P	40 F	25 P	488 NM
Health	+4.8 PL	2.73 SCS	+0.1 DPR			
Type	1.36 UDC	0.19 F&L	1.22 PTAT			

PEDIGREE

