



# LOT: 841 - 3 EMBRYOS BEYOND HI-NOTE X WSH GOLDMARIE

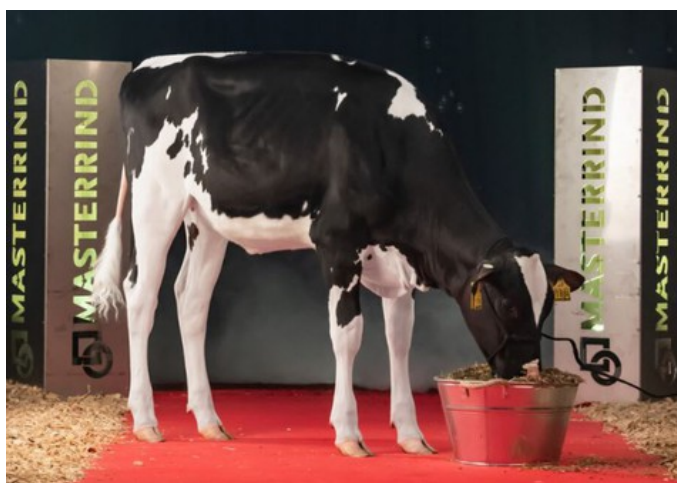
<b>LOT: 841</b>	<b>3 EMBRYOS BEYOND HI-NOTE X WSH GOLDMARIE</b>	
<b>3 embryos</b>	<b>♂ BEYOND HI-NOTE</b> FIGARO x DELUXE x BIGGELO	<b>♀ WSH GOLDMARIE</b> COMEBACK x BEACHBOY x TIMBERLAKE
<p>Donor WSH Goldmarie is a Comeback daughter with an all-round genomics profile that includes scores such as 153 gRZG, 2923 gTPI, 384 gNVI, 3745 gLPI, 1578 gISET and 4817 gPFT. Goldmarie knows how to emphasize longevity, positive fertility and great health traits.</p> <p>Goldmarie's pedigree goes back to the well-known German brood cow WEH Georgia VG-87, which has produced several generations of bull dams. In addition, Goldmarie's dams know how to produce a good amount of milk. The fact that the genes of this German cow family are in demand was proven by 3rd dam Guave, the number 1 Benz daughter worldwide. She raised a huge amount of €100,000 during the Masterrind Exclusive Sale of 2018! Guava then produced several sons who were sold to the AI. Think of Felino &amp; Crusader.</p> <p>The sire of the embryos is <b>Beyond Hi-Note</b>, a Figaro son out of the recently EX-90 classified AOT Delxue Hi-Lighted! Hi-Note brings a sky-high 3263 gTPI. In addition, he transmits high components (US based), +4.3 PL, +2.01 gPTAT and a favorable stature of +0.90.</p>		
<p><i>The embryos are stored in Netherlands. These embryos sell with a GenHotel bullcontract.</i></p>		
<p><b>Current price: Not logged in</b></p>		



Dam to Hi-Note



## WSH GOLDMARIE DE 365193884 DOB 29-07-2023



WSH Goldmarie



WSH Great GP-83



MB Garantie GP-83



SHA Grumeti VG-87



SHA Gerenuk EX-91

Comeback x GP-83 Beachboy x GP-83 Timberlake x Benz x VG-87 Rubicon x EX-91 Balisto x VG-87 Numero Uno x VG-87 Baxter x VG-86 Goldwyn x VG-88 Tugolo

### GENOMICS

Genomic index DEU: **+153 GRZG** (2024-12)

Production	654 M	0.18%F	0.12%P	45 F	35 P	128 RZM
Health	131 RZN	126 RZS	124 RZR	128 RZGes	2146 RZ€	
Type	102 KÖR	96 MTY	110 EUT	119 FUN	116 RZE	

Genomic index USA: **+2923 GTPI** (2024-12)

Production	1034 M	0.11%F	0.08%P	70 F	54 P	933 NM
Health	+6.3 PL	2.69 SCS	+1.3 DPR			
Type	1.01 UDC	0.92 F&L	0.61 PTAT			

Genomic index NLD: **+384 GNV** (2024-12; B&W)

Production	1414 M	-0.10%F	0.01%P	50 F	50 P	365 INET
Health	1063 LVD	111 UGH	109 CGT	114 VRU		

Type	102 FR	103 RB	105 UI	101 BE	104 TOT
------	--------	--------	--------	--------	---------

