



LOT: 840 - 3 EMBRYOS 3STAR OH SHIELD RC X WSH GOLDMARIE

LOT: 840	3 EMBRYOS 3STAR OH SHIELD RC X WSH GOLDMARIE		
3 embryos	♂ 3STAR OH SHIELD RC MONTEVERDI x RUBELS-RED x SALVATORE RDC	♀ WSH GOLDMARIE COMEBACK x BEACHBOY x TIMBERLAKE	

Embryos from WSH Comedy's full sister and family of the former #1 RZG sire SHA Foreman, are for sale. These embryos have been produced with the red carrier Monteverdi son **3STAR OH Shield RC** scoring 3062 gTPI, 3663 gLPI and 151 gRZG. With these figures, Shield RC is one of the most interesting red factor bulls worldwide and has been used as a sire of sons.

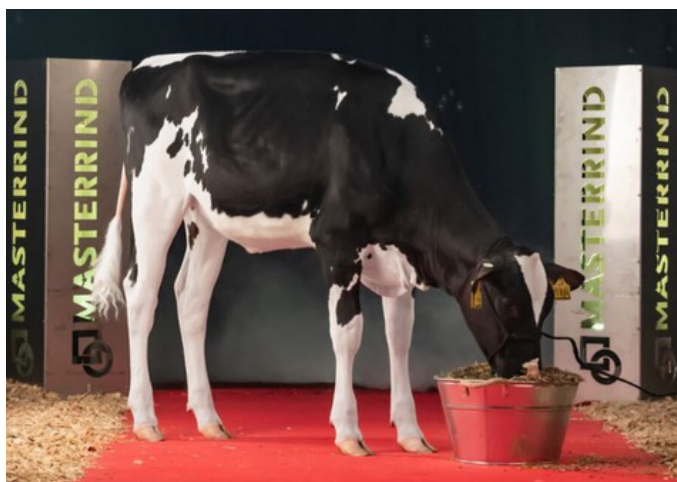
Donor WSH Goldmarie is a Comeback daughter with an all-round genomics profile that includes scores such as 153 gRZG, 2923 gTPI, 384 gNVI, 3745 gLPI, 1578 gISET and 4817 gPFT. Goldmarie knows how to emphasize longevity, positive fertility and great health traits.

Goldmarie's pedigree goes back to the well-known German brood cow WEH Georgia VG-87, which has produced several generations of bull dams. In addition, Goldmarie's dams know how to produce a good amount of milk. The fact that the genes of this German cow family are in demand was proven by 3rd dam Guave, the number 1 Benz daughter worldwide. She raised a huge amount of €100,000 during the Masterrind Exclusive Sale of 2018! Guava then produced several sons who were sold to the AI. Think of Felino & Crusader.

The embryos are stored in Netherlands. These embryos sell with a GenHotel bullcontract.

Current price: Not logged in

WSH GOLDMARIE DE 365193884 DOB 29-07-2023



WSH Goldmarie



WSH Great GP-83



MB Garantie GP-83



SHA Grumeti VG-87



SHA Gerenuk EX-91

Comeback x GP-83 Beachboy x GP-83 Timberlake x Benz x VG-87 Rubicon x EX-91 Balisto x VG-87 Numero Uno x VG-87 Baxter x VG-86 Goldwyn x VG-88 Tugolo

GENOMICS

Genomic index DEU: **+153 GRZG** (2024-12)

Production	654 M	0.18%F	0.12%P	45 F	35 P	128 RZM
Health	131 RZN	126 RZS	124 RZR	128 RZGes	2146 RZ€	
Type	102 KÖR	96 MTY	110 EUT	119 FUN	116 RZE	

Genomic index USA: **+2923 GTPI** (2024-12)

Production	1034 M	0.11%F	0.08%P	70 F	54 P	933 NM
Health	+6.3 PL	2.69 SCS	+1.3 DPR			
Type	1.01 UDC	0.92 F&L	0.61 PTAT			

Genomic index NLD: **+384 GNVI** (2024-12; B&W)

Production	1414 M	-0.10%F	0.01%P	50 F	50 P	365 INET
Health	1063 LVD	111 UGH	109 CGT	114 VRU		
Type	102 FR	103 RB	105 UI	101 BE	104 TOT	

