




LOT: 836 - 3 EMBRYOS T-SPRUCE HARMONY [SEXED] X WKF REVO MALOU

LOT: 836	3 EMBRYOS T-SPRUCE HARMONY [SEXED] X WKF REVO MALOU		
3 embryos	♂ T-SPRUCE HARMONY HOLYSMOKES x TAOS x LIONEL	♀ WKF REVO MALOU REVOLUTION x ALTAZAZZLE x KENOBI	

Embryos from Revolution daughter **Wkf Revo Malou** with 145 gRZG, 2995 gTPI and 314 gNVI! Malou brings a profile with enormous components in all systems, high health traits and A2A2.

Through her VG-85 scored dam, the donor descends from the former number 1 gTPI in Europe, namely K&L OH Mallory. This Mallory has served as an important embryo donor, which means that offspring can be found from her throughout Europe.

The influential Mabel cow family scores high in all systems, produces high levels of production and breeds super udders. Many bulls are from this family are with different Als.

The Revolution daughter is flushed with the bull **T-Spruce Harmony**. This Holysmokes son tests 3233 gTPI, 156 gRZG and 934 gPL! **Sexed semen has been used!** *Note: Harmony is a FastStart sire.*

The embryos are stored in Netherlands. These embryos sell with a GenHotel bullcontract.

Current price: Not logged in

WKF REVO MALOU NL 943549787 DOB 07-07-2023



3STAR OH Maline



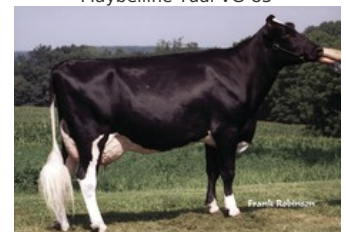
K&L OH Mabel



Maybelline Tual VG-85



Hermine Tual, family of Maybelline



Tolare Rudolph Cupid, zus v Jimtown

Revolution x VG-85 AltaZazzle x Kenobi x Granite x VG-85 Rubicon x GP-84 Cashcoin x VG-86 Man-O-Man x VG-86 Shottle x GP-84 Finley x Brett

GENOMICS

Genomic index DEU: **+145 GRZG** (2024-09)

Production	808 M	0.45%F	0.13%P	82 F	43 P	140 RZM
Health	118 RZN	118 RZS	104 RZR	124 RZGes	2208 RZ€	
Type	100 KÖR	103 MTY	102 EUT	94 FUN	99 RZE	

Genomic index USA: **+2995 GTPI** (2024-08)

Production	1322 M	0.15%F	0.09%P	91 F	66 P	1036 NM
Health	+5.6 PL	2.64 SCS	-1.5 DPR			
Type	1.76 UDC	0.38 F&L	1.46 PTAT			

Genomic index NLD: **+314 GNVI** (2024-08; B&W)

Production	1410 M	0.39%F	0.08%P	100 F	57 P	545 INET
Health	720 LVD	109 UGH	109 CGT	101 VRU		
Type	97 FR	102 RB	105 UI	98 BE	101 TOT	

