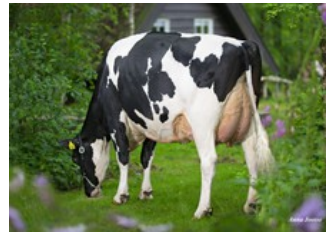




Lakeside Ups Red Range VG-86



De Oosterhof Dg Rose RDC VG-89



Holbra Mascol Pam VG-87



Sunday ALH Prudence VG-88



Mayerlane-DK Hiawatha EX-90

Dropbox x Perfect x VG-87 Mark RDC x VG-86 Salvatore Rc x VG-89 Rubicon x GP-83 Aikman RDC x VG-85 Man-O-Man x VG-87 Mascol x VG-88 Durham x EX-90 Rudolph

Top heifer for Swiss!

GENOMICS

Genomic index DEU: **+140 GRZG** (2024-09)

Production	584 M	0.04%F	-0.07%P	27 F	13 P	113 RZM
Health	122 RZN	124 RZS	116 RZR	122 RZGes	1386 RZ€	
Type	108 KÖR	119 MTY	130 EUT	113 FUN	135 RZE	

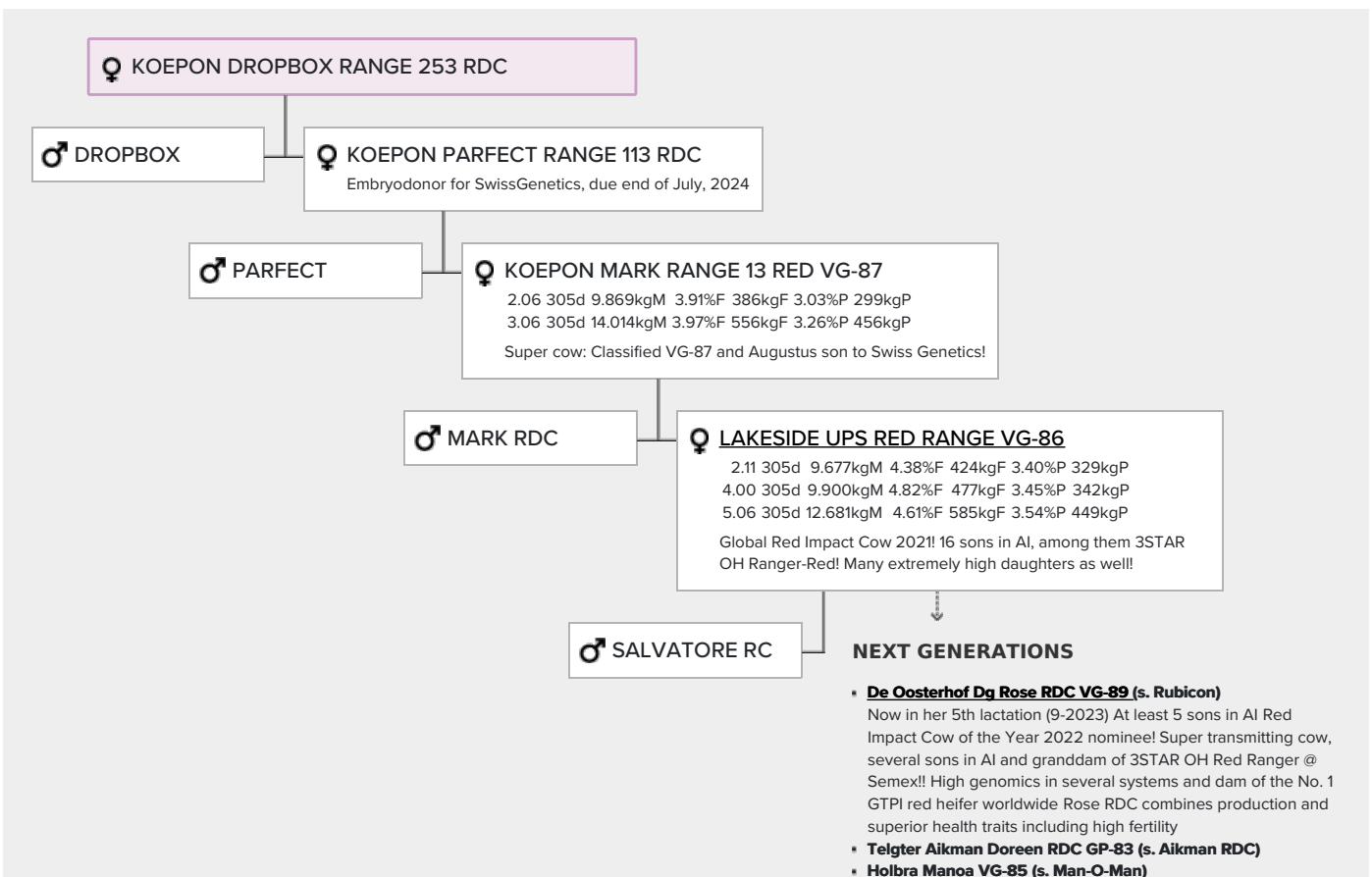
Genomic index USA: **+2980 GTPI** (2024-08)

Production	1512 M	0.02%F	0.01%P	62 F	50 P	773 NM
Health	+5.3 PL	2.65 SCS	+0.8 DPR			
Type	2.76 UDC	1.63 F&L	2.90 PTAT			

Genomic index NLD: **+342 GNVI** (2024-08; B&W)

Production	1458 M	-0.06%F	-0.16%P	56 F	34 P	314 INET
Health	941 LVD	110 UGH	110 CGT	109 VRU		
Type	99 FR	107 RB	114 UI	101 BE	109 TOT	

PEDIGREE



- **Holbra Pam VG-87 (s. Mascol)**
Lifetime: 2062d 73.468kgM 4.46%F 3274kgF 3.57%P 2620kgP
- **Sunday ALH Prudence VG-88 (s. Durham)**
- **Mayerlane-DK Hiawatha EX-90 (s. Rudolph)**